

## GETTING STARTED

WyldFyre Listings 7 automatically installs to the C:\WyldFyre directory (unless you specified otherwise during the installation).

### *Opening WyldFyre 7*

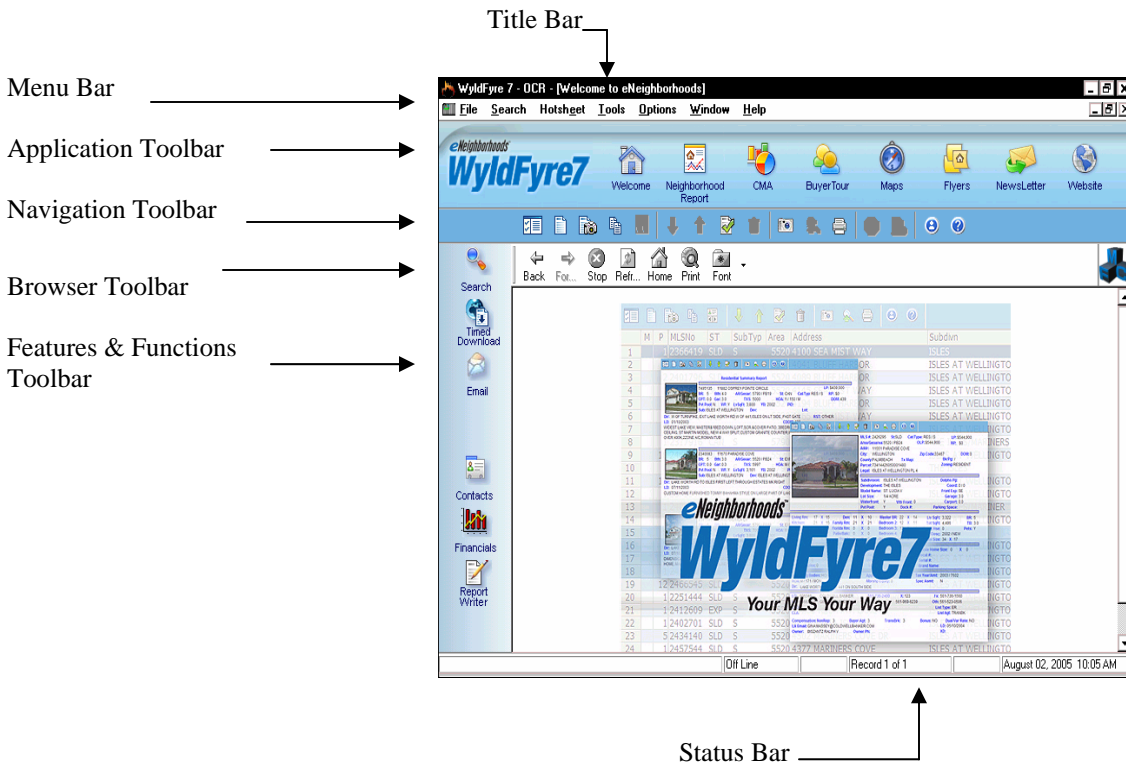


To open WyldFyre 7, click on **Start > Programs > WyldFyre > WyldFyre 7 > WyldFyre 7** or you can double click on the WyldFyre 7 icon on your desktop. When you first open WF7, you will be prompted to enter Primary Agent and Brokerage Information (see Primary Agent and Brokerage in Tutorial 2 to help you fill in this information).

### *Main Window*

The Main window consists of a Title Bar, Menu Bar, Application Toolbar, Navigation Toolbar, Browser Toolbar, Features and Functions Toolbar and Status Bar.

The program automatically opens with the eNeighborhoods™ WyldFyre 7 screen. You can click this screen and the program will take you to eNeighborhoods™ website.



### **Title Bar**

The Title Bar lets you know throughout the program where you are and what you are viewing.



### **Menu Bar**

The Menu Bar consists of pull-down menus in a row along the top of the window. When you click on any of the words, a pull-down menu appears beneath it, offering a bunch of commands related to that word. You will find some of the most popular commands as icons on your toolbars.



### **Toolbars**

There are three toolbars across the top of your screen that provides you quick access to many functions of the program as well as a toolbar down the left portion of your screen.

### **Application Toolbar**

The Application Toolbar is at the top of your screen and is a quick way to access the modules, reports, flyers, maps, newsletter and eNeighborhoods™ website.



### **Navigation Toolbar**

The Navigation Toolbar is right under your Application Toolbar and is used when you are in the WyldFyre program. Some of the buttons are used while viewing the Property Listing Table and some are used while viewing the Property Detail Reports. These buttons are discussed throughout the manual.

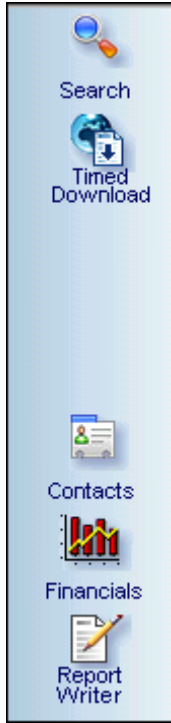


### **Browser Toolbar**

The Browser Toolbar is right below your Application Toolbar and is used when you are viewing web pages. For instance, when you are at the main window, you can click in the middle of the screen and the program will take you to eNeighborhoods™ website. While viewing the website, the Browser Toolbar will be visible to help you navigate through the pages.



### Features and Functions Toolbar



The Search button opens the Search Window.

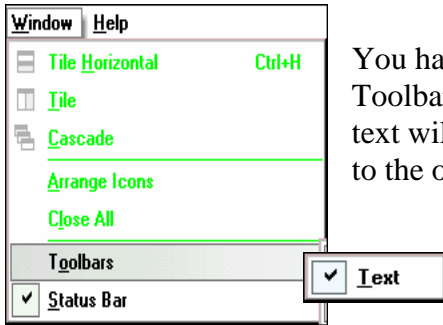
The Timed Download button opens the Timed Download and Automatic Client Update functions.

The Contacts button opens the Contact Database.

The Financials button opens the Financial Functions.

The Report Writer button opens the Report Writer module.

### Adding Text to the Navigation Toolbar



You have the option to add the text names on the Navigation Toolbar by clicking on **Window > Toolbars > Text**. The text will appear under the picture icons. A checkmark next to the option means the option is turned on.



*Text under the picture icons*

### **Status Bar**

Most Windows programs contain a Status Bar that displays current software information. This program is no different. The first section of the Status Bar (the lower left corner of your screen) displays important information regarding communications. The middle section will display the number of records downloaded or if a property is marked (depends where you are at within the program) and the right section displays the date and time.

